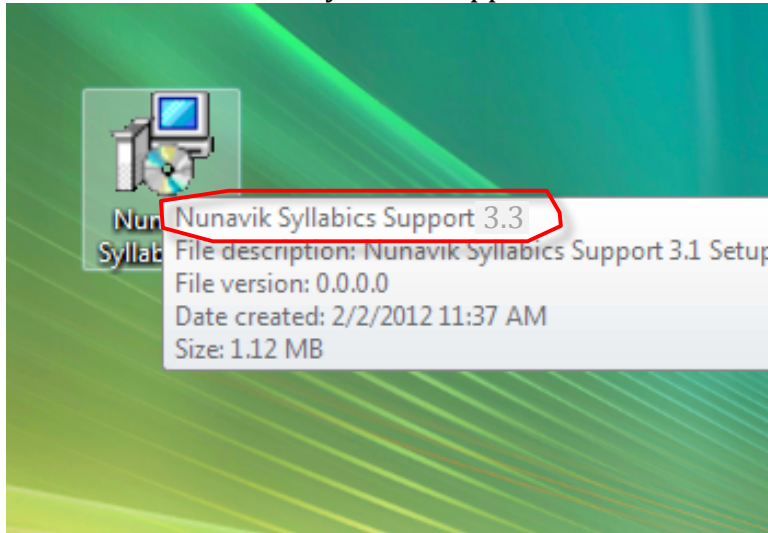


## Windows Installation

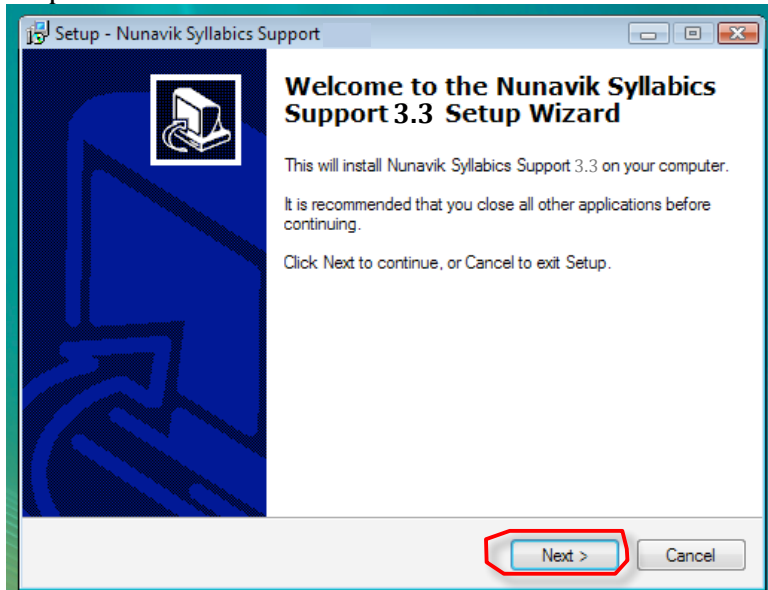
Step 1: Download the installer “Nunavik Syllabics Support 3.3.zip”

Step 2: On your computer, unzip “Nunavik Syllabics Support 3.3.zip” to reveal the installer file “Nunavik Syllabics Support 3.3”



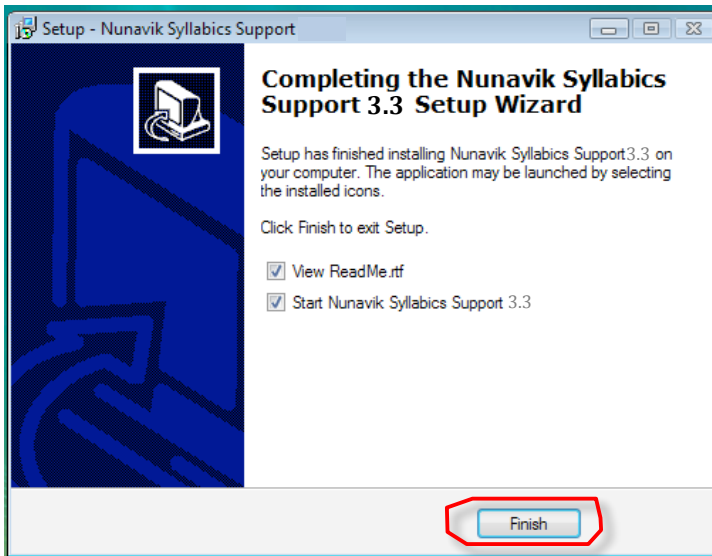
Step 3: Double-click on “Nunavik Syllabics Support 3.3” to launch the installer.

Step 4: Read the information on the Introduction screen and click on “Next”,

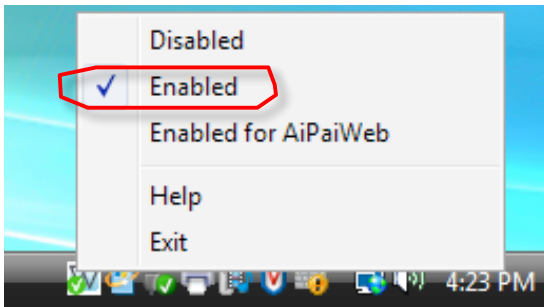


read some more and follow the information on the screens until you see “The installation was successful”.

Step 5: On completion of the installation process, you should see this:



Step 6: The normal state of the keyboard layout is "Enabled".



To use the keyboard layout, simply depress the Caps Lock key on your keyboard. When you are not typing in Inuktitut, you can still keep the keyboard layout Enabled.