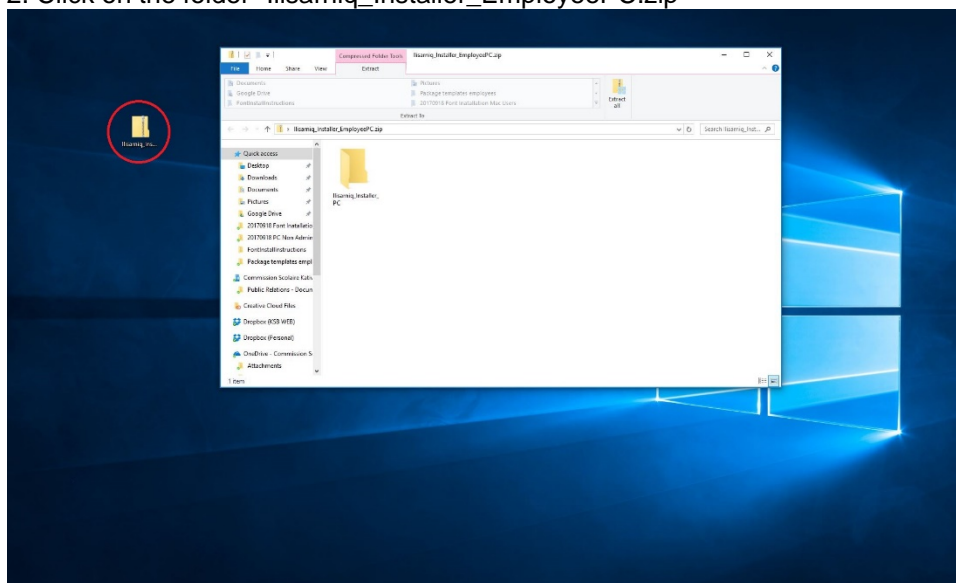


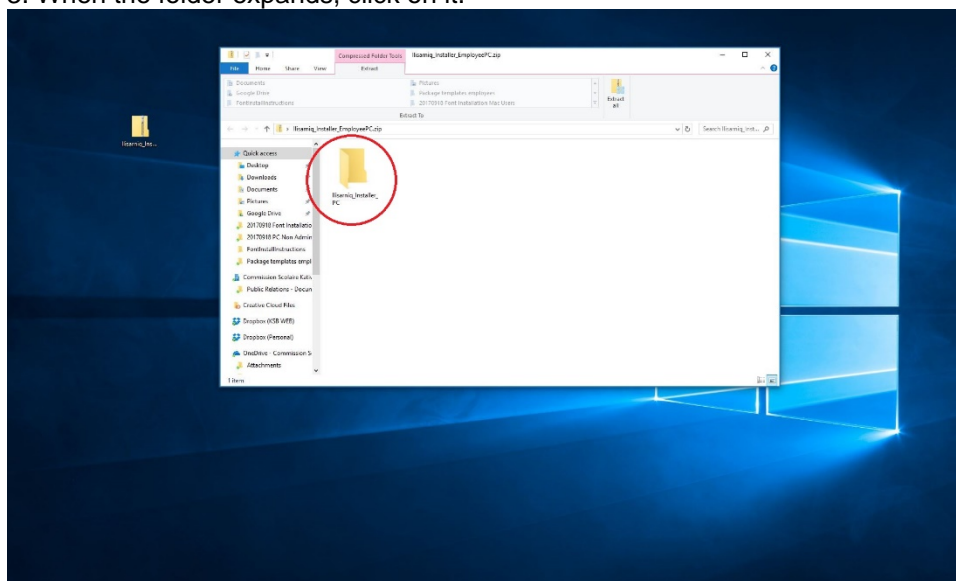


INSTRUCTIONS TO INSTALL THE ILISARNIQ TYPEFACE ON PC COMPUTERS

1. Close ALL open programs on your computer.
2. Click on the folder “Ilisarniq_Installer_EmployeePC.zip”

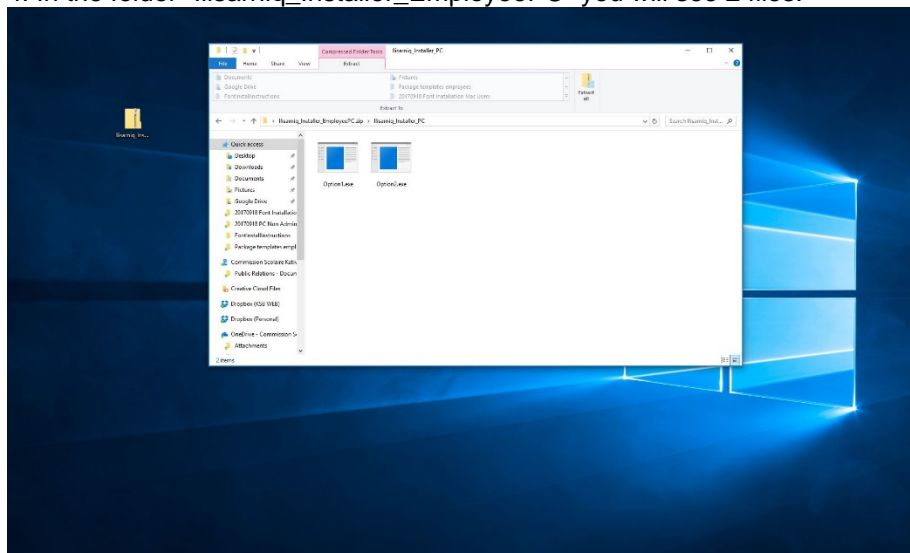


3. When the folder expands, click on it.

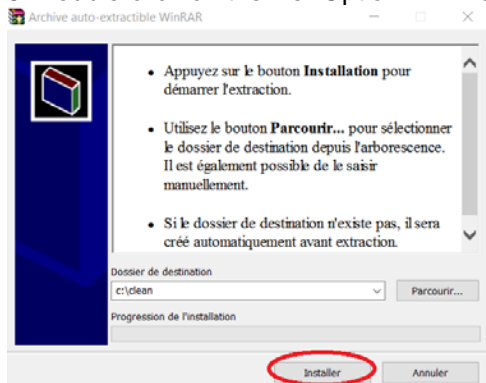




4. In the folder “Ilisarniq_Installer_EmployeePC” you will see 2 files.

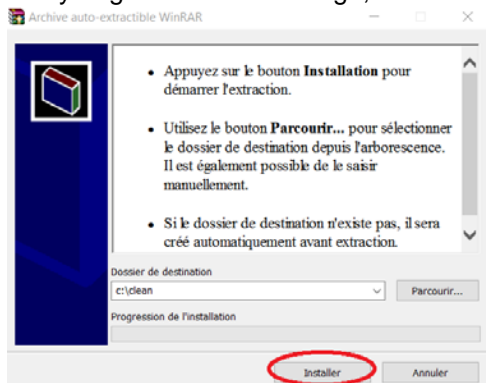


5. Double-click on the file “Option1”. When prompted, click the “installer”.



6. If you DO NOT get and error message, proceed to step 8.

7. If you get an error message, double-click on the file “Option2”. When prompted, click the “installer”.



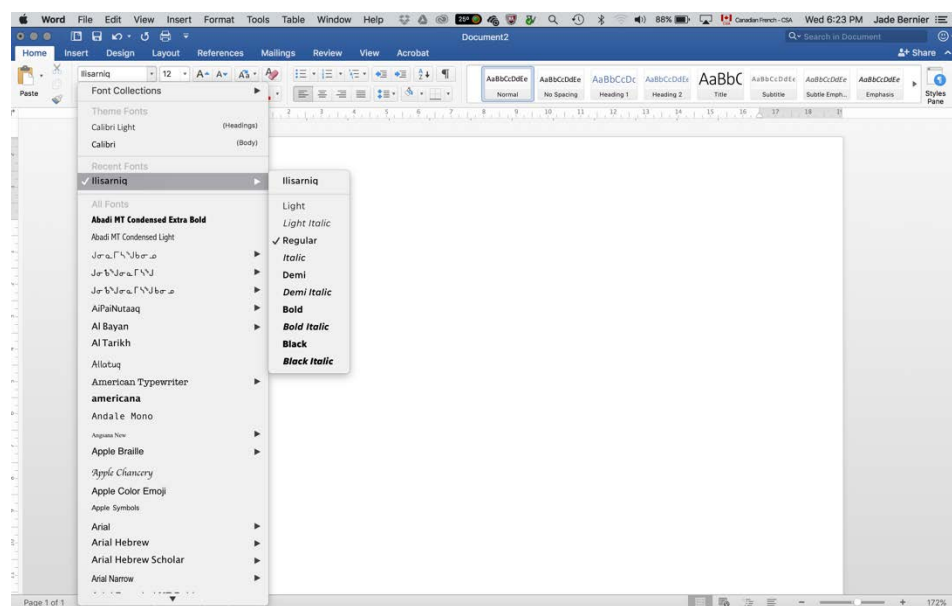


8. Restart your computer.

9. That's it!

WHEN USING THE FONT

1. When typing a document with the Ilisarniq font, you can choose 5 different thicknesses. Italics are available for each thickness.



2. To type in syllabics, simply press the Caps Lock key.

3. For both Roman and syllabic alphabets, the standard font size and thickness to use for school board documents is Ilisarniq, regular, size 10.