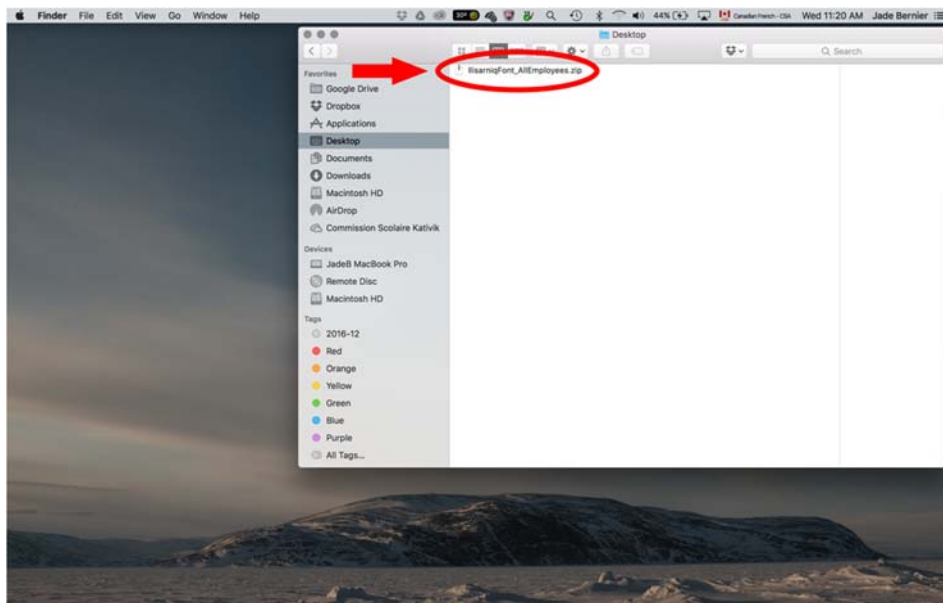


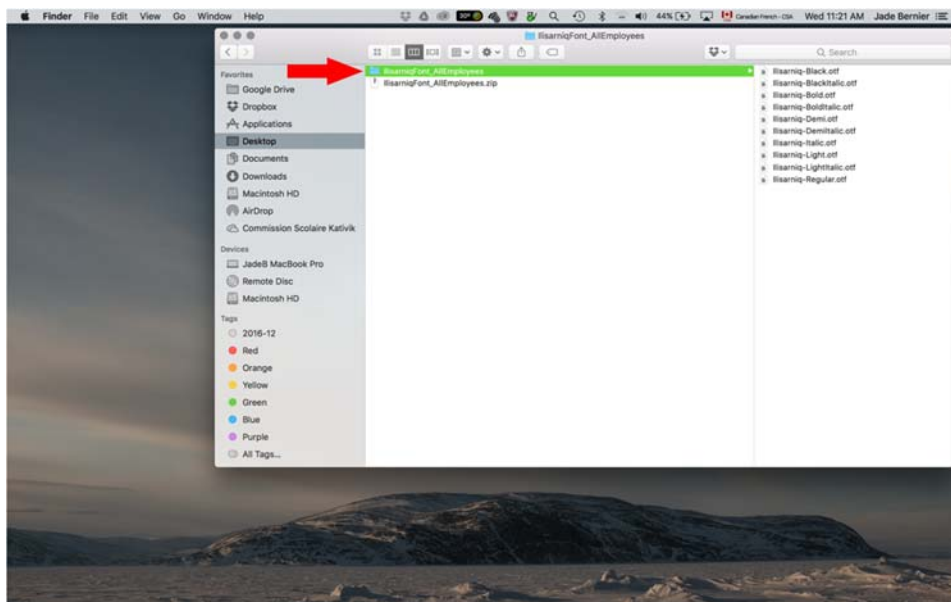


INSTRUCTIONS TO INSTALL THE ILISARNIQ TYPEFACE ON MAC COMPUTERS

1. Close ALL open programs on your computer
2. Click on the .zip folder “Ilisarniq_Font.zip”

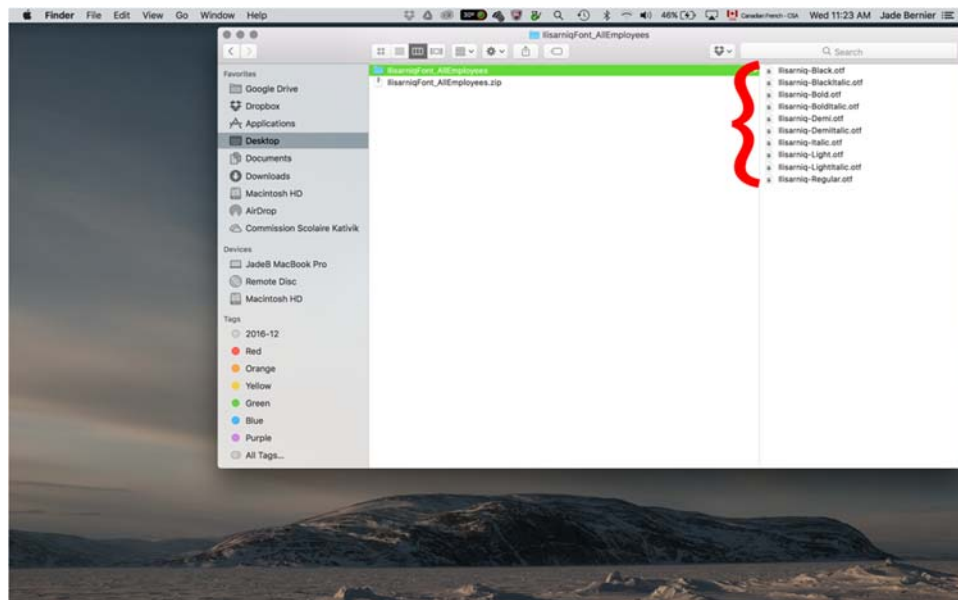


3. When the folder expands, click on it.

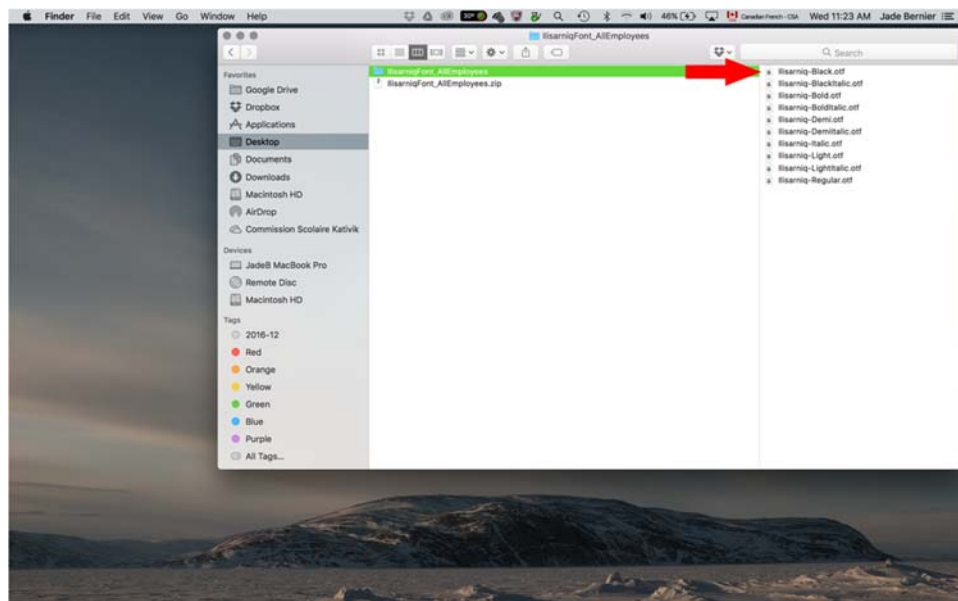




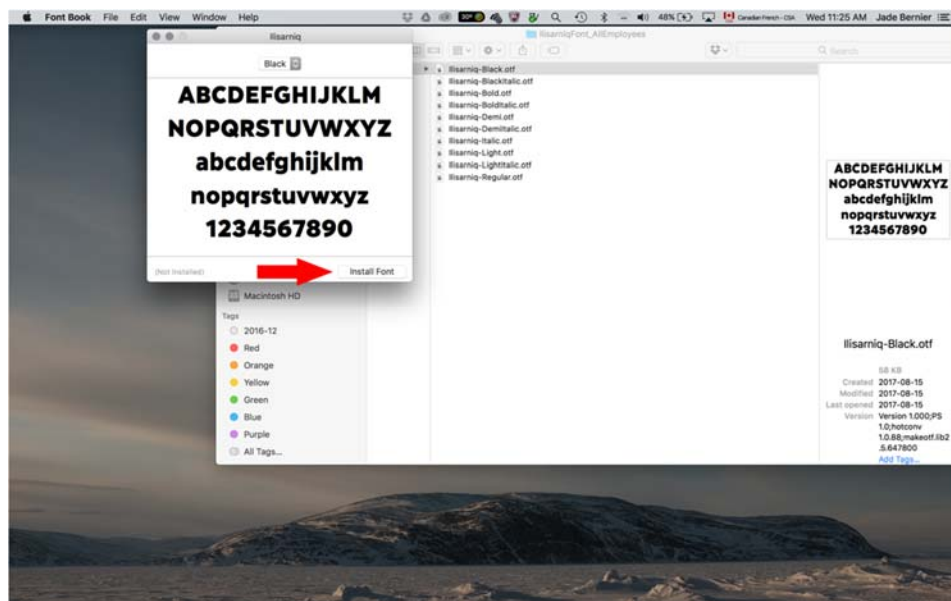
4. In the folder “Iisarniq_Font” you will see a list of 10 fonts to install.



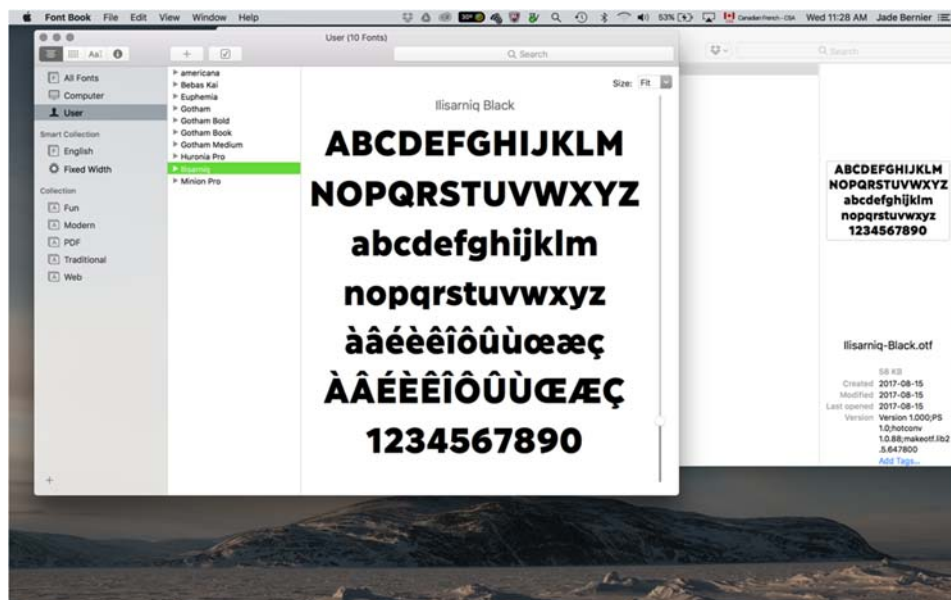
5. Double-click on the first font “Iisarniq-Black.otf”



6. A font installation window will pop-up. Click on the Install button.



7. The first font is installed. Repeat steps 5 and 6 for the other fonts.

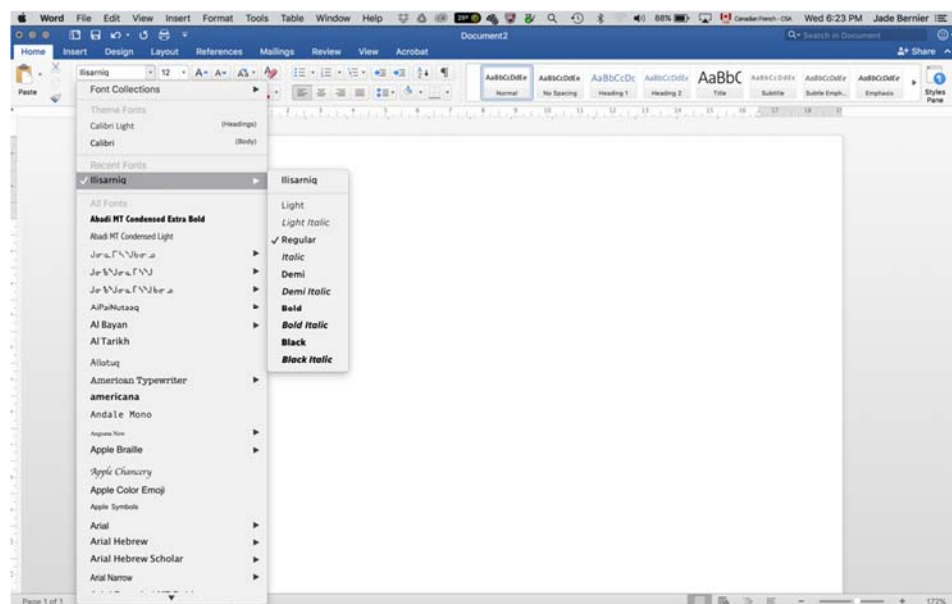


8. That's it!

WHEN USING THE FONT



1. When typing a document with the Ilisarniq font, you can choose 5 different thicknesses. Italics are available for each thickness.



2. To type in syllabics, simply press the Caps Lock key.
3. For both Roman and syllabic alphabets, the standard font size and thickness to use for school board documents is Ilisarniq, regular, size 10.